

Every year hundreds of thousands of batteries are prematurely replaced because of the performance robbing effects of sulfation.

Use of a DS will enable weak and dead batteries to regain their optimum performance levels and provide for a longer service life in a variety of applications.

THE PROBLEM:

During normal battery use, lead sulfate slowly builds up on the plates of all lead-acid batteries. The growth and subsequent hardening of this material results in 80% of all battery failures. The longer the battery is in service the more sulfation accumulates on its plates and the harder it becomes for the battery to either accept or deliver energy.

THE FIX:

By installing the DeSulfator DS Series, a "Sweeping Pulse" of energy is emitted into the battery set. The frequency at which these pulses are emitted are tuned to excite the structural components of the sulfate deposits. This process enables sulfation to revert back into the electrolyte solution. **NO OTHER PRODUCT OR PROCESS EXISTS TO EFFICIENTLY ACCOMPLISH THIS TASK.**

EASY TO USE:

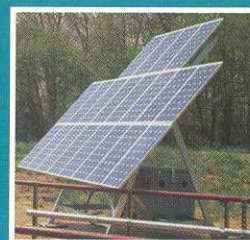
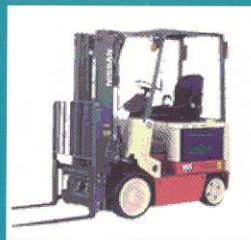
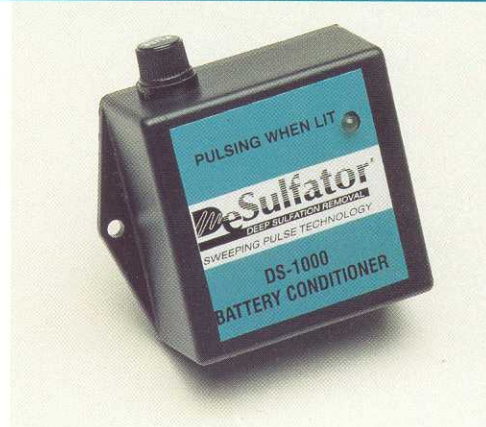
Simply attach the color coded leads to the battery terminals. Its smart multi-plexing circuitry uses only a fraction of a watt to continually condition the battery. It does not interfere with any type of battery charging equipment and works on all types of lead-acid batteries including wet cell, sealed, gel-cell or AGM.

USE OF THE DeSULFATOR WILL:

- Condition battery without the damaging effects of equalization
- Increase battery life
- Increase battery performance

- Increase reliability of equipment
- Decrease battery replacement costs

**Batteries suffering with damaged or defective cells cannot be rejuvenated.*



SPECIFICATIONS

	DS-500	DS-1000
POWER CONSUMPTION	.2 watts	.4 watts
DIMENSIONS	2"x3"x1.5"	3"x3"x1.5"
WEIGHT	.4 lbs.	.6 lbs.
LEAD LENGTH	12"	12"
SUGGESTED BATTERY CAPACITY	Up to 350 Amp Hrs.	350-1000 Amp Hrs.
VOLTAGE <i>Specify Voltage at Time of Order.</i>	12, 24, 36, 48, 60 and 72	

INNOVATIVE ENERGY SYSTEMS

9351 J. PHILADELPHIA ROAD • P.O. BOX 70060 • BALTIMORE, MARYLAND 21237-6060

Telephone: 410-686-3120 • FAX 410-686-4271

www.DeSulfator.com